



DAE Systems

Controllers

DAE Systems manufactures Modular Fan Controllers for maximising performance and flexibility, with an input of 24 to 270V DC the fan speed can be regulated single, twin or infinitely to meet the application conditions. They can also provide outputs such as speed, health warning, soft start, locked rotor protection and temperature monitoring.



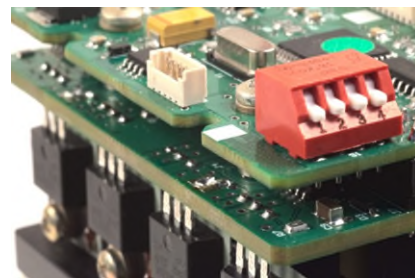
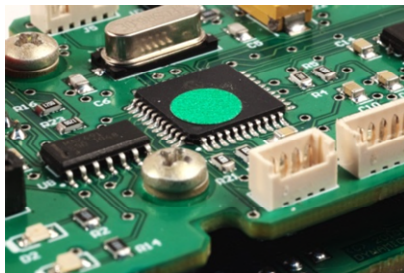
Intelligent Master Controller (IMC)

The master controller is connected upstream to the vehicle control systems through redundant CAN bus interfaces, and downstream to power relays, fans / blowers and sensors. Redundant vehicle power is run to the master controller and through a relay to all of the fans.

For example the IMC can individually activate or adjust fan performance based on sensor detection of fumes or particulates, or changes in altitude or temperature. The system can also change behaviour based on commands from the vehicle; for example all of the fans can spin at maximum power when the weapon systems are firing, or shut down completely via when the vehicles fire suppression system is activated.

The traditional architecture of building fans / blowers into a vehicle focuses on the vehicle's systems directly controlling each fan and blower. This requires cable runs from the vehicles control systems directly to each individual fan. Using the DAE intelligent master controller a complete fan system can be designed into specific areas of the vehicle; i.e. the engine compartment, the turret, the crew cabin. The vehicle systems need only run redundant cable runs for CAN bus to the DAE IMC's, which in turn control all of the fan characteristics in that subsystem. This simplifies design and maintenance.

The possibilities are limited only by the sensors available and the needs of the customer.



Controllers

Inquire at: <https://daesystemsnc.com>

email: cs@daesyst.com Phone: US +1-828 548-3192 _ UK +44 (0)7586 809 151